

# CEDIFOR

## Centre for the Digital Foundation of Research in the Humanities, Social, and Educational Sciences

SPONSORED BY THE



Federal Ministry  
of Education  
and Research

Approved under the name of Frankfurter eHumanities-Zentrum (FeHZ)

Goethe-Universität Frankfurt  
Technische Universität Darmstadt  
Deutsches Institut für Internationale Pädagogische Forschung



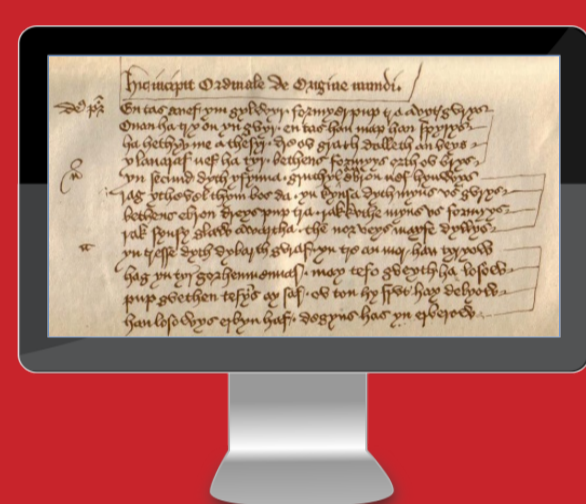
TECHNISCHE  
UNIVERSITÄT  
DARMSTADT



Educational Research and Educational Information

### CEDIFOR: Vision

- We serve as a **primary contact point for eHumanities projects** in universities, research institutes, archives, libraries, and museums in the Rhein-Main area and beyond
- We cover research projects in the **humanities, social sciences, and educational science**
- Our results are **sustainable** and our services are **long-term**
- We work with **text, image, video, and audio**
- We work and publish **nationally and internationally**
- We base our work on the results of the **LOEWE Research Cluster "Digital Humanities"** (2011-2014)



### Innovative Research Conceptions

#### Epistemological Innovation

##### Consulting and Supervising Novel Research Concepts

- Integration of humanities with computer science for mutual benefit
- Discovery, elaboration, and realization of research projects

##### Developing Tools for Multimedia Research Subjects

- Integration of multi-code, multimodal, and multimedia research subjects
- Creation of highly structured corpora: internally linked and stratified across time

#### Technological Innovation

#### Infrastructural Innovation

##### Creating a Research Infrastructure for the Common Usage of Tools and Data

- Enable shared usage of research subjects, data, and tools
- Create sustainable results, workflows, and best practices

### eHumanities: The Current State

#### Research Environments

- Annotation:** CSniper, WebAnno, OWLnotator
- Processing:** NLTK, GATE, UIMA, DKPro, eHumanities Desktop
- Discovery:** Semantic CorA

#### Assignment and Linking of (Meta-)data

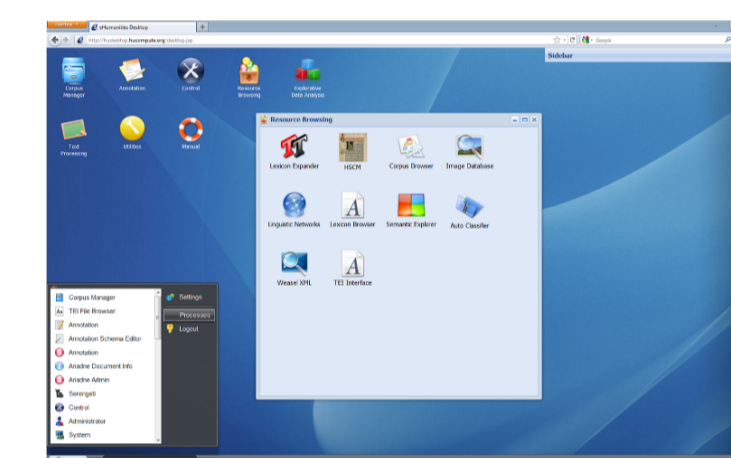
- Based on the **Lexical Markup Framework:** UBY
- Based on the **Semantic Web** standard: OWL, RDF

#### Development and Analysis of Multimodal/Multimedia Data

- Image:** ImageDB
- Video/Audio:** ELAN

#### Infrastructure

- DARIAH-DE
- CLARIN-D



#### Challenges

- Researchers in humanities have difficulties to manage the coordination, interpretation, and linking of growing amounts of metadata
- Lack of accessible tools for the analysis of multimedia data (image, video and audio)
- Error rates in applied Natural Language Processing methods are too high in practice

Tools developed and/or maintained by ourselves are **highlighted**.

### First Year Pilot Projects

#### Historical Semantics, Cooccurrence Analysis, and Collation

- extension of the Historical Semantics Corpus Management tool
- development of a digital, diachronic dictionary for classical and later forms of Latin
- online editions in cooperation with the Monumenta Germaniae Historica

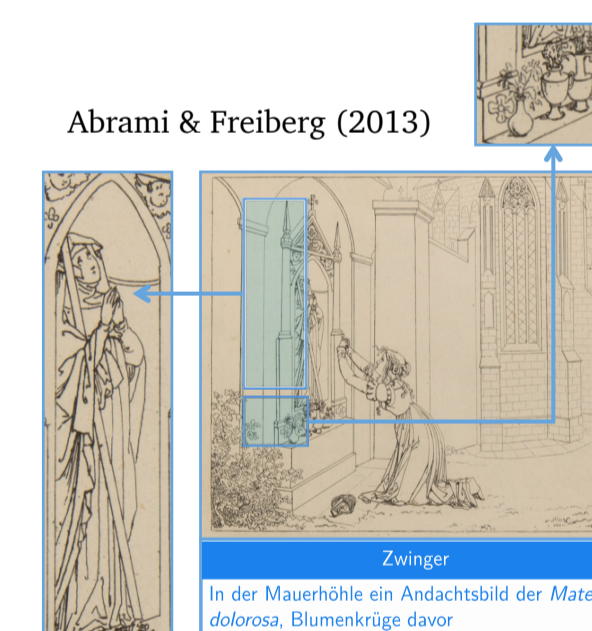
#### Academic Trails in Multimedia Spaces

- intelligent system for processing image-text spaces in art
- semi-automatic extraction of highly structured corpora from large databases of image-text media
- recommendation-driven access to archive data for the investigation of content

#### Academic Trails in Multimedial Spaces

- Goals:**
  - Development of a system for computer-supported traversing of multimedia spaces in the context of fine arts
  - Development of an ontology for the structural annotation of image-text spaces ("Guided Trails")
  - Development of an explorative system to be integrated with OWLnotator, which enables a semi-automated intermedia and crossmedia annotation
  - Elaborating and addressing research questions dealing with intermediality by the help of highly structured corpora

- Users:**
  - Art historians, historians, philologists, media scientists
  - Museums, archives



#### Computer-Supported Discovery of Metaphors

- context-based discovery of metaphors in large corpora
- computer-supported visualization and processing of the data
- theory and content-based classification of metaphors

#### Inferences Between Linguistic Attributes and Higher Level Features

- correlations between linguistic attributes and personality traits
- example traits: performance motivation, emotional stability, locus of control
- use case: analysis of student texts

#### Personality Analysis Based on Linguistic Attributes

- Research Questions:**
  - How well can we predict various traits from text automatically? (e.g. age, extraversion vs. introversion)
  - Which aspects of language usage can be indicators for certain personality types, moods, attitudes? (e.g., do depressed people talk more about themselves? do extroverts talk more in general?)
  - How robust are the results across different data sets? (e.g., do gender differences in style hold for both school essays and social media?)

- Results from Preliminary Studies on Personality Traits:**
  - Accuracy automated classification of "Big 5" personality traits on student essays: 0.56-0.60
  - Linguistic indicators for *Extraversion*: "love", "boyfriend", "so much" etc.

### eHumanities: Our Approach

#### Epistemological Innovation

- Supervision** of pilot projects ("translation" between humanities and computer science)
- Creation of **reference workflows**
- Increasing national and international **visibility** (common publications, open access)
- long-term** support for end users

- Technical support for **digitizing/**converting data
- Extending existing tools** according to project-specific needs
- „On-demand“ support**
- Technical documentation**
- Open Source Software **Releases**

#### Technological Innovation

#### Infrastructural Innovation

- Creation of a **research agenda to ensure reusability**
- Organization** of workshops, providing a technical research infrastructure
- Documentation** and Publication (Workflows, Best Practices)

### Partner Institutions

#### Rhein-Main

- Leibniz-Institut für Europäische Geschichte Mainz
- Universität Gießen
- Hochschule für Musik und Darstellende Kunst Frankfurt
- Universitätsbibliothek Frankfurt
- Deutsche Nationalbibliothek Frankfurt
- Städel Museum Frankfurt
- Freies Deutsches Hochstift / Frankfurter Goethe-Museum
- MPI für Europäische Rechtsgeschichte Frankfurt
- ULB Darmstadt

#### National and International

- Monumenta Germaniae Historica München
- Bibliothek für Bildungsgeschichtliche Forschung Berlin
- Universität Hildesheim
- Universität Bamberg
- Max Planck Institut Nijmegen
- Harvard University
- Centre for the Study of Manuscript Cultures Hamburg
- Europeana Den Haag

#### Executive Board

- Prof. Dr. Jost Gippert (Goethe-Universität Frankfurt)
- Prof. Dr. Iryna Gurevych (Technische Universität Darmstadt)
- Prof. Dr. Alexander Mehler (Goethe-Universität Frankfurt)
- Prof. Dr. Marc Rittberger (Deutsches Institut für Internationale Pädagogische Forschung)

#### References

- Abrami, G. & Freiberg, M. (2013). Final Presentation for the Evaluation of the LOEWE Research Cluster "Digital Humanities".

#### Image Sources

[http://commons.wikimedia.org/wiki/File:Origo\\_Mundi\\_kynsa\\_gwersow.jpg](http://commons.wikimedia.org/wiki/File:Origo_Mundi_kynsa_gwersow.jpg)

Contact: Dr. Ralf Gehrke, [gehrke@rz.uni-frankfurt.de](mailto:gehrke@rz.uni-frankfurt.de)